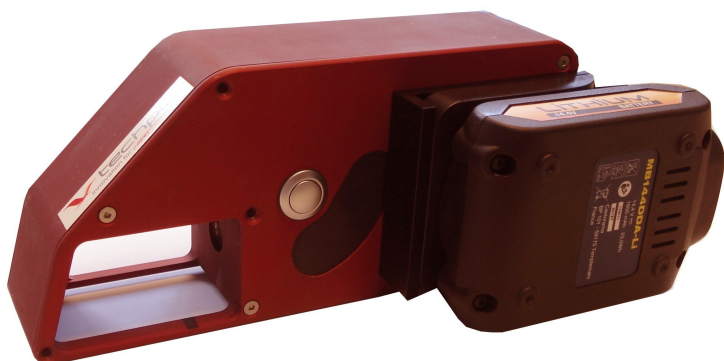


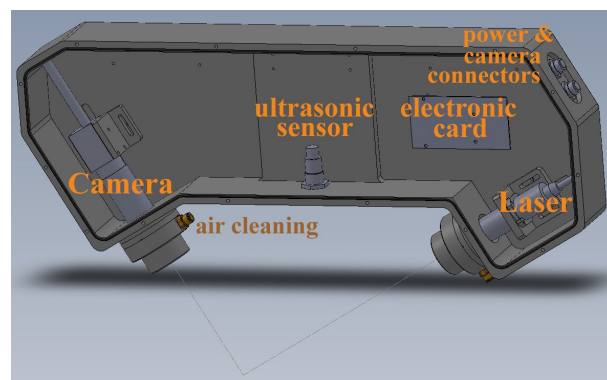
HR3D - ROUGHNESS & STEP HEIGHT MEASUREMENT

EQUIPMENT FOR THE CONTROL OF ROUGHNESS AND SCORE

- HR3D enables instantaneous and accurate measurement of the surface topography.
- Available in 2 versions : for measurements in the laboratory and an online system
- Typical applications for the HR3D :
 - quality control for roughness of board and paper
 - quality control for score of board packaging
 - quality control for roughness of engineered wood panel



HR3D LABORATORY



HR3D ONLINE

Description

The HR3D is a state-of-the-art equipment for the measurement of roughness. A contactless laser beam maps the analyzed surface and data is recorded by a high resolution digital camera.

The user friendly software, running in a controlling PC under Windows operating system, receives the recorded data and calculates the several roughness parameters R_a , S_a , R_q , S_q , R_a MinMax, R_q MinMax and provides test reports which may be easily integrated into any network or DCS.

It consists in a small and portable unit for manual laboratory offline measurements for Q.C. and R&D, and as a rugged measuring head for installation in the production line for automatic online measurements for quality and process control.

Summary

A powerful tool for assessing objectively the control of roughness and of score, providing instantaneous accurate test results and ensuring a quick return on investment



TECHPAP SAS

CS 90251 - 38044 Grenoble cedex 9

Tél. +33 (0)4 76 51 74 75 - Fax +33 (0)4 76 42 05 04

www.techpap.com - techinfo@techpap.com